



www.cees.org.uk

01780 782386

cees.stibbington  
@cambridgeshire  
.gov.uk

# Cambridgeshire Environmental Education Service

## NEWS UPDATE

Issue 50  
November 2014

### Read on to find out about:

- CPD for PRIMARY GEOGRAPHY and HISTORY: Courses and Subject Leader Network meetings for Spring Term 2015
- CPD for PRIMARY SCIENCE:
  - ⇒ Rocks and Soils at KS2 - 13 January
  - ⇒ Plants and animals at KS1 and 2 - 10 March
- ECO COUNCILLORS' CONVENTION at Stibbington Centre, Mon 2 to Tues 3 February
- New CEES DAY COURSES at Stibbington, Burwell House, Wisbech Castle and Vine House Farm for Spring 2015 and residential bookings to July 2016

### E-News from CEES

CEES' E-newsletter is available at [www.cees.org.uk/news/newsletters](http://www.cees.org.uk/news/newsletters)



CPD and training



General interest and open events



Courses, visits and special events for schools

**English:**  
Wed 14 Jan  
Stibbington  
Tue 20 Jan  
Swaffham  
Bulbeck

**Maths:**  
Wed 21 Jan:  
Stibbington  
Tue 27 Jan  
Burwell House

### CPD opportunities: BRINGING ENGLISH AND MATHS TO LIFE IN THE SCHOOL GROUNDS

*I feel inspired to take  
my class outside.*

A wealth of ideas for taking English and maths lessons outside into the school grounds will be shared with delegates at CEES' workshops in January. Bringing learning to life in the real world has been shown to contribute pupil engagement, understanding and enthusiasm for learning as well as raising attainment. Bookings are now being taken for our afternoon workshops which take place from 1.30 to 4.30 at a choice of venues on selected dates in January.

Comments by teachers  
attending similar workshops

*Great ideas to take back to school.*



### LIFE ON THE HOME FRONT, 1914 — 18 A new ks2 programme of learning activities at STIBBINGTON CENTRE and WISBECH CASTLE

Following very successful trials, CEES is now offering Day Courses for ks2 on the theme of Life on the Home Front during the First World War. At both venues everyone will be dressed in costume for their day of practical activities which will include: laundry duties with wash tub and mangle; sending messages using semaphore; training for first aid and stretcher bearing; and traditional handicrafts. At Stibbington the programme also includes lessons in the period classroom, and at Wisbech an Act of Remembrance at the war memorial.



### CHRISTMAS FAYRE 1914 for all the family at Stibbington Centre on Saturday 13 December, 10am to 4pm

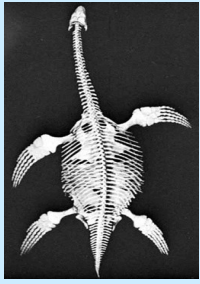
On Saturday 13 December Stibbington Centre will be opening its doors for a 1914 Christmas Fayre for all the family. Visitors will be invited to take part in re-enactments, including 1914-style lessons, wash day chores and playtime with replica toys and games. There will also be traditional Christmas handicrafts, an exhibition of documents and artefacts, seasonal refreshments, and carol singing around the Christmas tree.



### INVESTIGATING WEATHER and CLIMATE Day Course for KS2 at BURWELL HOUSE

Following the installation of a state of the art weather station, supplied by local company Delta-T Devices Ltd and a refitted TV studio, CEES is pleased to offer a new **Investigating Weather and Climate** day course for KS2 at Burwell House. Visiting groups take real-time measurements using the weather station and a variety of field equipment, and they create and record a weather programme in the TV studio.

**STOP PRESS:** At the time of writing, places are still available on CEES' late November CPD workshops, at Stibbington Centre: Sun 23 Nov, 1.30-4.30 Christmas willow sculpture with Sue Kirk and Tues 25 Nov, 1.30-4.30 Christmas junk sculpture with Nick King At Burwell House: Thurs 27 Nov, 1.30 - 4.30 History — From flint to Iron at KS2 with Andrew Wrenn



**CPD for  
PRIMARY SCIENCE:**

**ROCKS and SOILS  
for KS2 - 13 Jan**

**PLANTS and ANIMALS  
for KS1 and 2 - 10 Mar**

**Rocks and soils** is a CPD course for non-geologists who are teaching at ks2 and need guidance on igneous and sedimentary, permeability and fossilisation, and more.

**Plants and animals** is for non-ecologists who are teaching about plants and animals, including habitats, food chains, identification and classification.

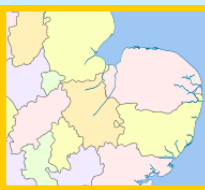
Both courses will take place from 1.30 to 4.30 at Stibbington Centre. Participants should gain knowledge, ideas and techniques to help them teach their science topics with increased confidence.



**RESIDENTIAL  
EXPERIENCE**

**Late availability 2015  
and bookings to July 16**

Stibbington Centre's residential courses diary is now filling up for September 2015 to July 2016. Residential programmes are designed jointly by Centre teachers with school teachers to support classroom work. Schools interested in making a booking should contact the Centre as soon as possible. One space remains in the Summer 2015, **Mon 13 to Wed 15 April.**



**CPD for  
PRIMARY  
GEOGRAPHY  
and HISTORY**

**with subject advisers,  
Helen Johnston and  
Andrew Wrenn**

CEES' programme of training events and meetings designed to support geography and history in Primary Schools continues in the Spring Term with:

**Where on earth are we? - Teaching Locational Geography**  
Thursday 15 January at Stibbington Centre, 1.30 - 4.30.

**A rough guide to Physical Geography** 1.30 - 4.30

Thursday 5 March at St Anne's Primary, Godmanchester

**Teaching History at KS1** 1.30 - 4.30

Thursday 12 March at Spinney Primary School

In addition to the above courses, twilight meetings:

**Geography/History Subject Leader Network meetings**

Thursday 5 February at Mayfield Primary School, 4.00 - 5.30

Thursday 26 February at Hampton Hargate Primary School

Places at Network meetings are free of charge to schools that have signed up to our new Primary Geography and History Network. For those who have not signed up, it's not too late.

**Geography  
& History**

**Courses and  
Subject Leader  
Network  
meetings**

A booklet containing booking forms and details of all courses may be found on the Stop Press page at [www.cees.org.uk](http://www.cees.org.uk).



**ECO COUNCILLORS'  
CONVENTIONS**

**at Stibbington Centre  
on Mon 2 to Tues 3 Feb**  
Places available

For those who are working towards achieving their Eco Schools Green Flag or renewing their Award, our two-day residential programme gives Eco Councillors from up to four different schools a team building and personal development opportunity. Our programme is led by CEES specialist teachers, and is designed to inspire children and equip them with Eco Schools ideas to take back to school.



**QUIZ NIGHT at  
STIBBINGTON CENTRE**

**Friday 6 February  
from 7.30pm**

Teams of up to 6 are invited to reserve places for our light-hearted, themed quiz night. A hot supper will be served during the interval, and teams should bring their own drinks. Places may be booked at £8 per person and reservations are now being taken.



**NEW CEES  
DAY COURSES and  
WORKSHOPS in  
schools for  
Science Week 2015**

Supporting Science Week, 2015, CEES has developed its range of Day Courses at Stibbington Centre, Burwell House, Wisbech Castle and Vine House Farm to complement the requirements of the new National Curriculum for Science at ks1 and 2. Some themes may also be delivered as workshops in schools. Book early to ensure availability!

**CEES**

[www.cees.org.uk](http://www.cees.org.uk)

[cees.stibbington@cl.cambridgeshire.gov.uk](mailto:cees.stibbington@cl.cambridgeshire.gov.uk) **01780 782386**



Cambridgeshire  
County Council

