



# Cambridgeshire Environmental Education Service

## NEWS UPDATE

Issue 67 December 2017

### E-News from CEES

CEES' E-newsletter is available at [www.cees.org.uk/news/newsletters](http://www.cees.org.uk/news/newsletters)



CPD and training



General interest and open events



Courses, visits and special events for schools

[www.cees.org.uk](http://www.cees.org.uk)

Tel: 01780 782386

Email: [cees.stibbington@cambridgeshire.gov.uk](mailto:cees.stibbington@cambridgeshire.gov.uk) @CEES\_Cambs



### Seasonal Greetings

We have been getting in to the festive spirit Victorian style here at the Centre and would like to take this opportunity to wish all of our customers best wishes for a peaceful festive season and a prosperous New Year. We look forward to welcoming you in 2018 and beyond.

And just in case you have a spare few minutes to fill, these [simple outdoor activities](#) can be easily squeezed into the hectic schedules in the run up to Christmas.

### Are you looking to develop the skills of your Young Leaders?

Our two-day residential opportunity on the **29th and 30th January** could be just the course for you.

Based at Stibbington, this 2 day programme for KS2 Young Leaders, includes a Sustainable Sleepover and is packed with team building and personal development opportunities for Young Councillors. With between 3 and 6 Schools taking part it, also provides an excellent opportunity for sharing ideas and good practice.

A charge of £60 per child for the two-day experience, including tuition, accommodation, equipment and materials, plus all meals from lunch on day one through to lunch on day two. No charge for accompanying adults. Contact us at [cees.stibbington@cambridgeshire.gov.uk](mailto:cees.stibbington@cambridgeshire.gov.uk) to book your places.



### Outdoor Learning and Science ideas for every season

Start your new year with inspiration and learning with one of our CPD courses in Science, Geography and Early Years

**15th January—Outdoor Learning in the Early Years**

**17th January—Assessment in History and Geography**

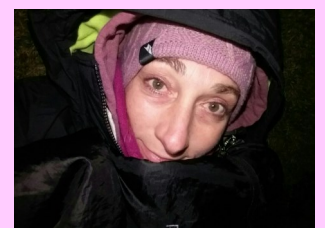
**22nd January—Seasonal Science**

For details of current courses visit our [website](#). Contact us on 01780 782386 to book your place or email [cees.stibbington@cambridgeshire.gov.uk](mailto:cees.stibbington@cambridgeshire.gov.uk)



### Helen sleeps out for homeless shelter charity

Along with her family, Helen, our Centre Manager, slept out with over 60 other people in Corby on the 2nd December to raise awareness for local charity [Corby Nightlight](#). Luckily, with no frost, the night was warmer than expected and cardboard proved to be warm and comfortable protection from the cold and wet. Do you have any stories about Charities you have supported this Christmas? Send them to us for a feature in our next newsletter.



## Get Green on 20th February

Our popular Green Day will be held again on 20th February 2018. Designed to inspire eco action and a sustainable ethos in Schools, the programme will include a variety of eco-themed activities and ideas to take back to school for future development. The chance to work with Eco-Councillors from a variety of different schools also provides opportunities to share ideas and develop teamwork skills. Further details are available on our website.



## Blue Planet 2—inspiration for change

So many pupils will be enthralled by #BluePlanet2 and there are so many resulting opportunities to educate and inspire pupils, families and schools to help our oceans: [www.bbc.co.uk/programmes/articles/1FlfcGGKPSWv3m7JdfBT5dv/get-involved-with-ocean-conservation](http://www.bbc.co.uk/programmes/articles/1FlfcGGKPSWv3m7JdfBT5dv/get-involved-with-ocean-conservation)



## Residential Calendars for 2018-19 and 2019-20 now open!

Our Residential Calendars for 2018-19 and 2019-20 are now open for bookings. We are offering a residential visit in 2018-19 at 2017-18 rates **for all new customers able to confirm a booking by 31st January 2018.**

[#WinterResidentials](#), the recent campaign from Learning Away, raises awareness about the benefits of residentials for schools in the winter months. The attached leaflet illustrates some of our stimulating Winter programmes that are tailor made to incorporate suitable seasonal activities, whilst still providing the children with the many opportunities of a residential visit. You can also take advantage of our lowest residential rates, with bursaries available for eligible pupils.

Details on pricing for 2018-19 will be available early in the New Year. To reserve your visit, call us on 01780 782386 or email [cees.stibbington@cambridgeshire.gov.uk](mailto:cees.stibbington@cambridgeshire.gov.uk)



## Funding for Geography Field Trips

Established in 1957, the Frederick Soddy Awards have supported dozens of geography field trips from a primary school residential on the Isle of Man to a Sixth Form expedition to Indonesia. Every year a total of £2,500 is made available for primary and secondary schools. This is split into individual awards of between £250 and £850 depending on the merits of each project. The award is for a group of students between 5 and 18 years of age. There is no limit on the number of students in the group. Field trips can involve human or physical geography, but in view of the Trust's objective to encourage the study of the whole life of an area with an emphasis on human geography, priority will be given to projects with a strong human element. Further information is available via the [Geographical Association website](#). The deadline for next round of funding applications is 18th January.

